

PHILIPS

HeartStart
AEDs



HeartStart FRx Maintenance

Your HeartStart FRx AED will need to be maintained periodically. Each system comes with a maintenance sticker to help you keep track of the two accessories you will need to replace, which are the battery and the pads cartridge.

On this sticker: Write down the key dates for both the Install Date for your battery and the Expiration date of your pads.

For your battery, the Install Date can be found on the sticker on the front of your battery.

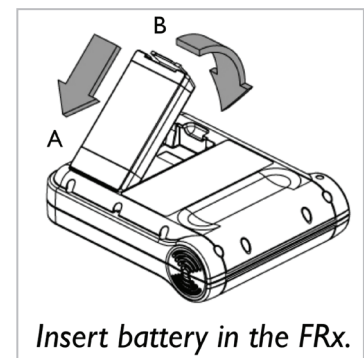
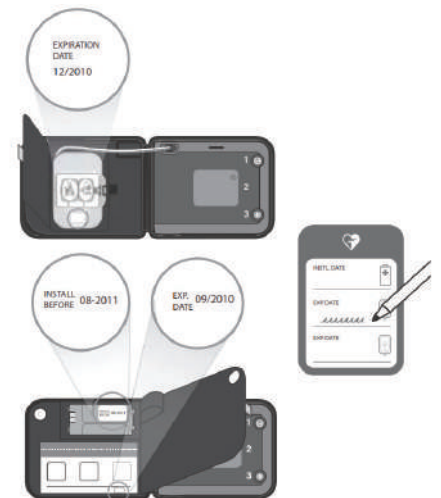
Keep in mind that the Install date on the battery is NOT an expiration date. It represents the latest date the battery should be installed into the device in order to ensure full battery life.

For the pads, you can find the expiration date printed on the pads packaging.

Changing the battery

To change the battery, press this latch to pop out the old battery and slip in the new one, bottom end first, snapping the top firmly into place.

The battery can be recycled at an appropriate recycling facility.



As soon as your new battery is inserted, your defibrillator will automatically begin a comprehensive self test.

If the orange button is flashing, press it. The device should respond “Verified”.

After passing the self-test, your AED will be in standby mode and ready for use. All you need to do is make sure this green light is blinking.

To store your FRx, put the device back into the right side of the case. With the pre-connected pads on the left.

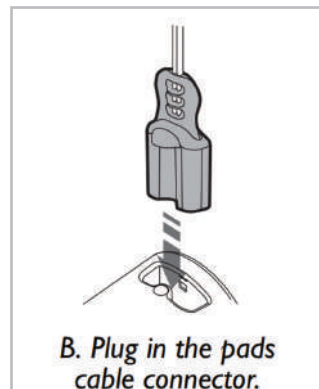
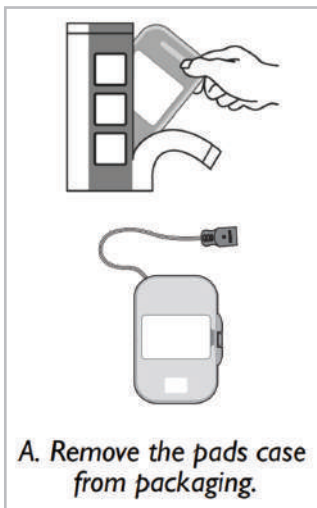
Store a spare battery and set of pads in their unopened packaging underneath.

Changing the pads

Replace your Pads when they reach their expiration date. Replace your battery when your device alerts you to.

The Pads are designed to be stored pre-connected to your AED.

To replace the pads, disconnect the cable of the old pads. Take your new pads case out of its package, pull out the connector a short length and insert the connector plug into the defibrillator.



Philips Medical Systems Nederland B.V.
Veenpluis 6
5684PC Best
The Netherlands



Philips Medical Systems
22100 Bothell Everett Highway
Bothell, WA 98021-8431, USA